

Problem: Insufficient ventilation and light

Solution: Add a cupola of clerestory windows that can be opened by remote control. A moisture sensor automatically closes the windows when it rains. (Motor and sensor by Sentry, ordered along with windows from www.marvin.com.)



Back to the Garden

A gracious home from the 1890s gets a new eat-in kitchen and a better connection to the yard and patio

In Philadelphia, a grand Georgian-revival house needed reworking to make it friendlier to a modern family of five. Originally, a dark front parlor and hall led to a cramped kitchen at the back of the house. A tiny addition off the kitchen housed a mudroom/laundry and served as a clumsy main entry for the home.

A new design replaced the old addition with a bright new eat-in kitchen/family-room addition that extends into the garden. Working with a limited footprint, architect Jeff Krieger designed the addition's exterior, which mixes elements of the family's vacation cottage in Maine and the original house.



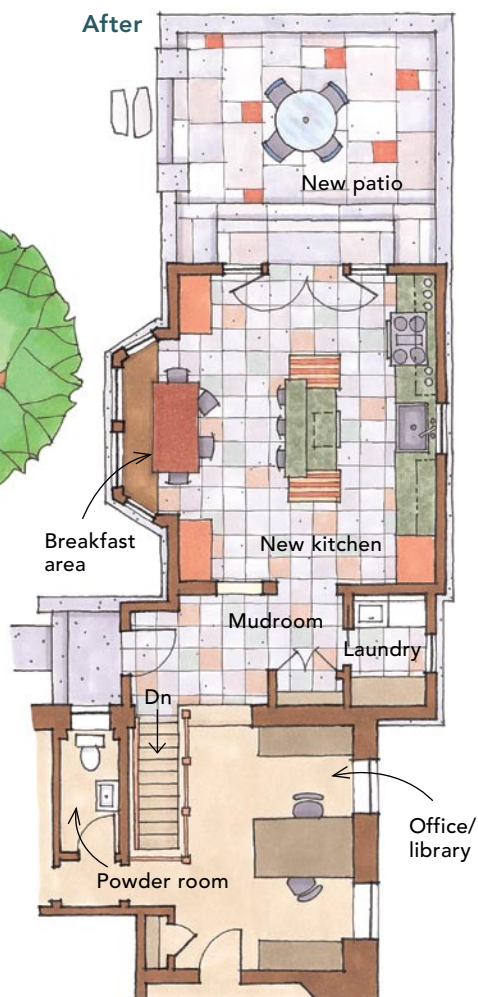
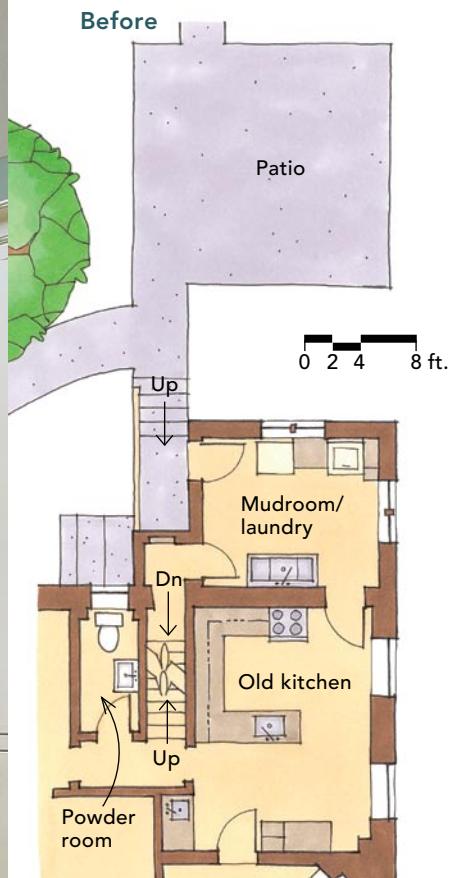
Problem: Undersize pot racks

Solution: Design a stainless-steel rack spanning the length of the kitchen island.



Problem: A kitchen too small for the whole family

Solution: Design a bay-window area that's big enough for a dining table and a window seat. The space is open, sunny, and comfortable for any kind of get-together.



"aha!" moment

The cramped kitchen was located at the back of the house, and a small rear addition housing a mudroom and laundry served as an awkward main entry from the driveway. There was no useful, functional space for the whole family. Also, the house lacked a connection to the flagstone patio, the backyard, and the garden of lovely old Japanese maples.

Krieger devised an eat-in kitchen/family-room addition with a new double-door entry opening onto the patio.



Design: Krieger + Associates Architects Inc., Philadelphia, Pa.; www.kriegerarchitects.com

Construction: Cherokee Construction, Wyndmoor, Pa.



Cool detail

The homeowners worked with Blue Bell Kitchens in Springhouse, Pa., to design utensil holders that are recessed into the blue Montauk Brazilian slate counters. Three holders on each side of the stove keep cooking tools organized and at hand.