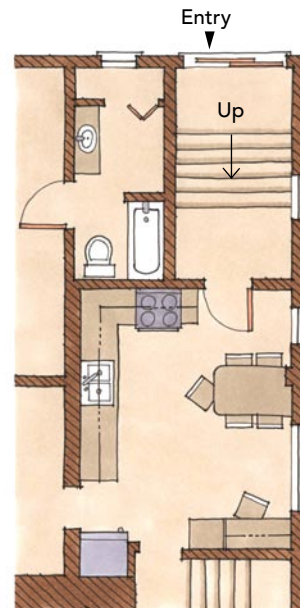


A Galley Kitchen

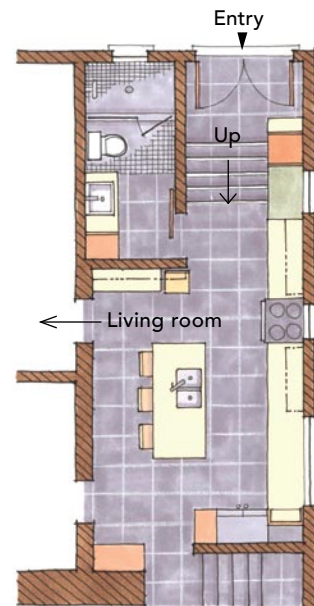
Improves Circulation

Expanding the kitchen into a poorly designed entry solved several floor-plan problems



Before

0 2 4 8 ft.



After

Problem: Not enough daylight
Solution: A skylight over the back stairs and new windows at the rear entry introduced an amazing amount of natural light.

"aha!" moment

As Dave Mulder began to design, he saw a way to include the back porch both to expand the kitchen and to get more daylight. This move freed up floor space for a passage to the living room, a new island that provides informal seating, and a more convenient entry to the bathroom.



Problem: Outdated cabinetry in need of a style injection

Solution: Custom cabinets of bamboo plywood are sleek, crisp, and contemporary.

Like most renovation projects, this one began with a simple objective. Builder Dave Mulder was asked to move a bathroom doorway. But once the project began, the kitchen became an issue. Rick, the homeowner, loved the old kitchen, but it was cramped and hard to navigate, and wasn't even close to ergonomic. The cabinets were the oak and white-melamine models popular 20 years ago. The small windows didn't add much light.

Rick had considered renovating his kitchen, but it wasn't until Dave suggested that the space expand into a covered back entry that he felt compelled to pursue it. In the end, they moved the door and conquered many other shortcomings of a dark, outdated, disorganized kitchen.

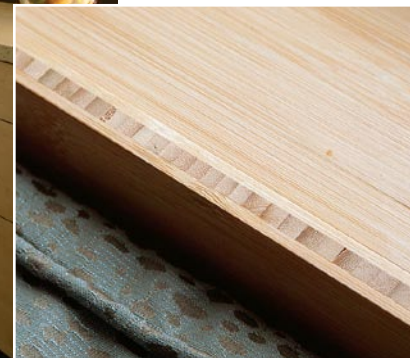
With a little creative demolition, Dave was able to incorporate the enclosed back entry into the kitchen. Designing and building new cabinets improved the storage, and concrete countertops added better workspace. The space and light from the enlarged back is a great complement to the modern interior.

Design and construction: Dave Mulder (www.fourbeight.com), Grand Rapids, Mich.



Cool detail

The former entry became a mudroom with plenty of cabinet space for shoes and boots, and a window seat trimmed with bamboo.



Notable elements

- Sink:** Vigo Undermount
- Pendant lights:** Ikea Basisk
- Faucet:** Grohe Ladylux Pro
- Cabinet finish:** Water-based Enduro satin poly from General Finishes
- Concrete-counter finish:** Cheng Concrete Countertop Sealer