

# Installing a Pedestal Sink

Perfect for tight spaces, these sinks are painless to install if you follow a few basic guidelines

BY ED CUNHA

**T**he only time my life as a plumber becomes complicated is when my wife, the contractor, needs a job done on one of her projects. In these cases, I remember every husband's famous last words: "Yes, dear." One of her most recent projects was a powder-room remodel. An old vanity had been removed and the bathroom rearranged for more efficient use of space. A pedestal sink was the perfect space-saving solution for the washbasin.

Installing one of these babies isn't rocket science, but there are a few tips and tricks that can make the job go more quickly and smoothly. And following the right installation sequence is key. Here's my take on demystifying the installation process. □

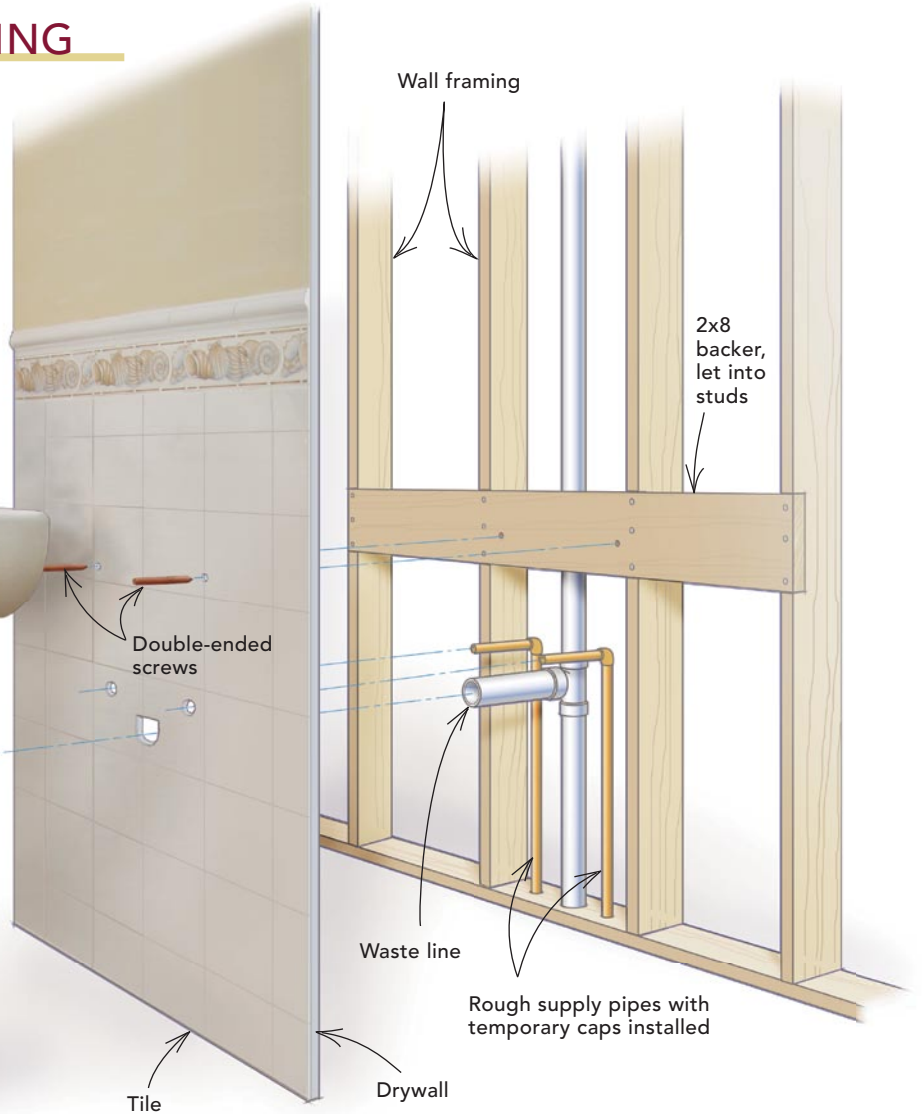
Ed Cunha lives and works in Brewster, Mass. Photos by Tom Meehan, except where noted.



# 1

## PLAN FOR VISIBLE PLUMBING

A 2x8 let into the wall framing supports the anchor bolts that hold the sink. Remembering that the plumbing shows on a pedestal sink, put the supply pipes on the same horizontal line, equally spaced on each side of the drain line. Keep all rough plumbing at the manufacturer's recommended height and spread.



### TIP: DRILLING THROUGH TILE



Dry-fit the sink on its pedestal, checking its position with a level. **1** Use a pencil to mark the position of the sink pedestal on the floor and the position of the bowl on the wall, then trace the mounting-bolt location onto the tile. **2** Use a nailset or a

common nail to nick the tile glaze to start the drill bit. **3** Drill the hole with masonry bits, starting with a smaller bit and working up to the right diameter. **4** Thread the double-ended mounting screws into place.

# 2

## SUPPLY VALVES GO IN BEFORE THE SINK

While the sink is still dry-fit, measure the distance between pedestal and wall to make sure there is plenty of space for the supply valves. **1** Measure and cut the supply stubs so that the compression connection on the valve falls 3 in. from the wall. **2** Remember to slide the escutcheon onto the pipe before sweating the valve in place. **3** Before installing the sink, attach the faucet and supply lines to the sink. Smaller sinks can be held in your lap, and bigger sinks can be placed on the cardboard they were shipped in.



# 3

## HANG THE SINK

Next, slide the sink over the bolts (photo above), align the sink to the marks you made earlier, and snug the securing nuts. Connect the sink drops (sink supply lines) from the faucet to the valves (photo right). Flexible lines can be used, but solid lines look better for exposed plumbing.



# 4

## THEN HOOK UP

**1** Mark the length of the drain line, then remove it and cut it to length. **2** Measure and cut the decorative chrome sleeve that fits over the white PVC drain. **3** The sleeve slips over the drain stub along with the escutcheon, **4** and the drain can be glued into place.



# 5

## DRAIN AND DONE

It takes some creativity to use a wrench in the tight space behind the pedestal (photo left). The last step is inserting plastic shims from the hardware store to level the sink (photo below). It's now ready for action.



## Don't buy the cheapest sink

Pedestal sinks come in a wide variety, and the price range is equally broad. Be wary of bargain-priced models. In many cases, these sinks aren't cast as well and can be difficult to install. Additionally, a poorly cast pedestal sink can have a high point in the basin or be noticeably out of round.

Some plumbers have brands that they like to install, but I prefer to look for specific features.

The sink for this bathroom, made by American Standard ([www.americanstandard-us.com](http://www.americanstandard-us.com); 800-442-1902), had plenty of room under the sink for anchoring the faucet. But the most helpful feature I look for in a pedestal sink is a base with a back that's wide open all the way to the floor. The open back gives you extra work area for easier trap installation.

Top two photos: Courtesy of Kohler. Bottom two: Courtesy of Clawfoot Supply.

