

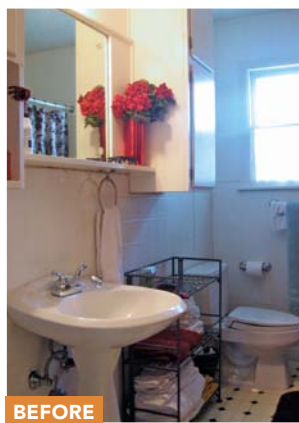
Singular and Serene

A remodel turns the only bath this Austin homeowner has into the only one she needs

Teresa Anderson waited 15 years to redo the bathroom in her home in Austin, Texas, but once under way, she needed the project finished fast.

Here's why: The bathroom is the only one in her '50s-era house. For the same reason, the 6½-ft. by 9½-ft. space deserved a big boost in both function and appearance, something architect Cindy Black planned to achieve with an ambitious remodel that involved moving the toilet and creating a new shower in its place.

Builder David Wilkes met the dual challenge by making sure that all fixtures and materials were on site and that the custom cabinets were in production before opening a single wall. He then worked around the toilet as much as possible, temporarily resetting it several times in order to keep the room semi-functional as the project moved toward completion. The work concluded with a fully functional bathroom that was lighter, brighter, and many times more serene than the one that had occupied the same footprint.



BEFORE

Problem: An out-of-date bathroom fails at functionality and aesthetics

Solution: Eliminate the linen closet, and put the toilet in its place, freeing the far end of the room for a wet area that includes a new open shower and a slightly smaller tub.

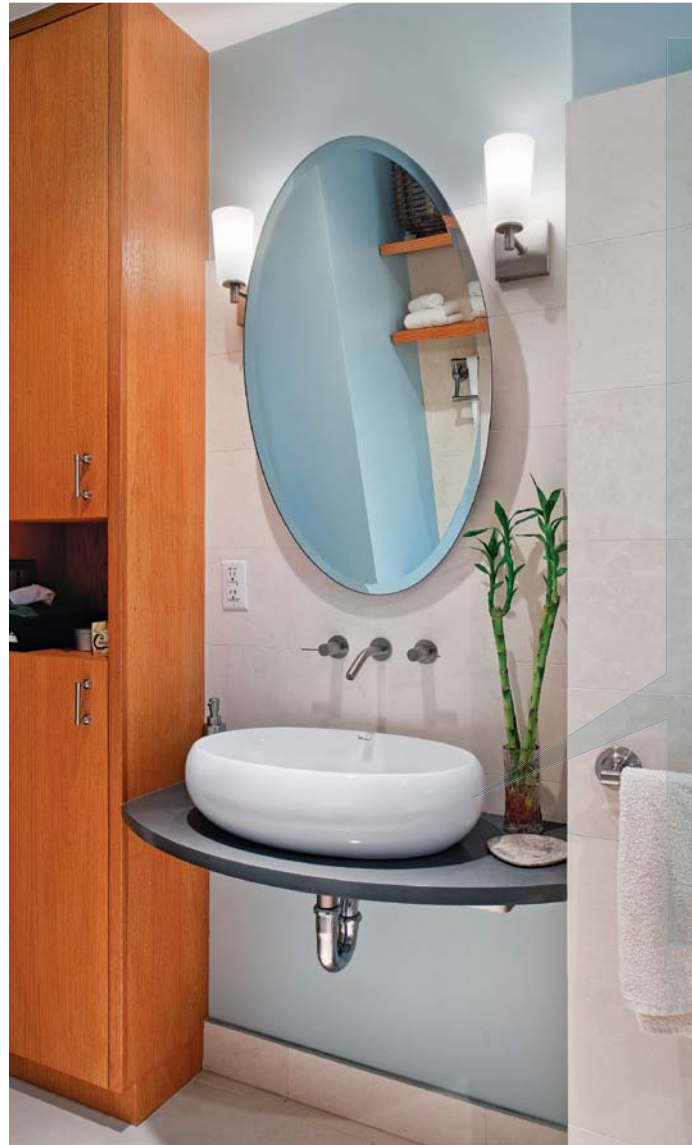
Notable elements

Tub www.sunrisespecialty.com • **Faucet, showerhead** www.kohler.com (Stillness line)
Sink www.whitehauscollection.com • **Mirror, hardware** www.restorationhardware.com
Countertop www.caesarstone.com • **Apple-stone limestone** www.architecturaltilestone.com



Cool detail

"Floating" shelves of rift-sawn white oak are supported by invisible brackets from Häfele. The illusion of weightlessness is repeated at the sink counter, which is held up with a steel support attached to the wall framing.

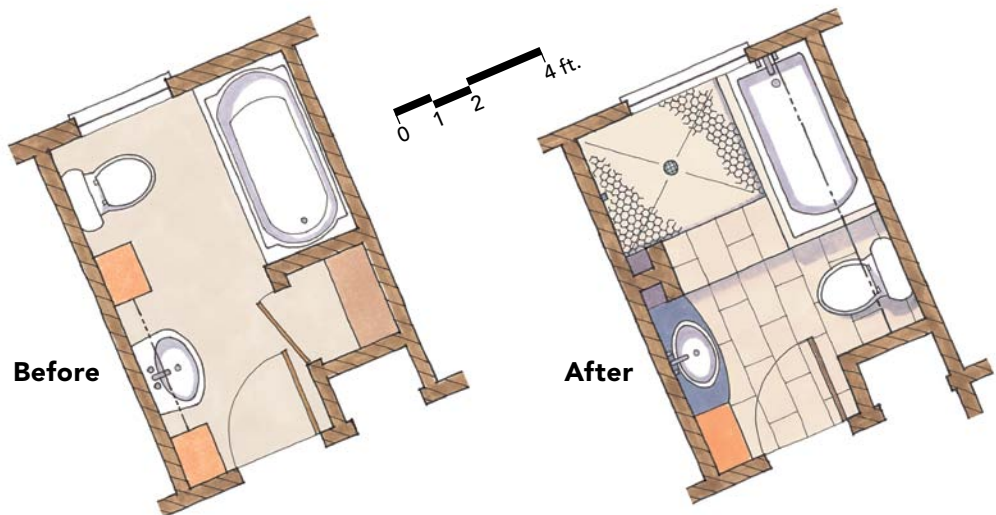


Problem: Dreary, dated surfaces lack appeal

Solution: Soft curves and light colors in the new bath evoke a calm, spa-like environment. The floor and tub-wall tiles are 9-in. by 18-in. apple stone, a velvet-smooth limestone from Turkey. The back wall is tiled with Akdo Icelandic blue-glass tile in a staggered pattern. The egg-shaped sink is matched with a curved countertop of dark CaesarStone, the same material used for niche shelves in the shower and beside the sink.



Architect/designer: Cindy Black
www.hellokitchen.net
Builder: David Wilkes Builders
www.davidwilkesbuilders.com



"aha!" moment

Finding a shorter-than-average tub—this one is only 55 in. long—was critical to meeting code-required clearances for the repositioned toilet. Then there was the matter of the homeowner's approval. "To a lot of people, that would be a nonstarter," said Black, but Anderson was fine with the smaller size, although she climbed into the dry tub to test the fit as soon as it arrived.