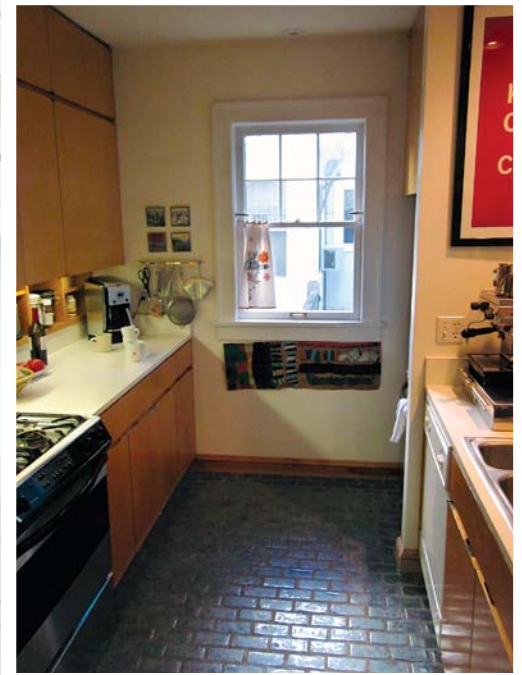




# Tasteful Transformation

A small kitchen is redesigned for open family living

BY DAVID O'BRIEN WAGNER



**Before and after.** A poor 1980s remodel is remedied with a new, more logical kitchen layout that's complemented by clean, durable materials and fixtures.

**W**ith three growing kids and a family dog, the owners of this 1920s Dutch colonial in the heart of Minneapolis were looking to create a more modern and functional kitchen that would integrate well with the house's traditional bones and detailing. The new kitchen replaces a 1980s remodel and addition that was dark, inefficient, and cramped. The homeowners were interested in creating open and visually connected spaces with a slightly Scandinavian feel as a nod to their family heritage. Budgetary limitations meant that we would be unable to alter the external footprint, so we knew the work would need to be subtle.

### **Small changes with significant results**

The original flow of space from the dining room to the family room was a rat's maze of traffic patterns. The new layout creates a direct route between the front and the back of the house. The

# 3 ZONES MAKE THE SPACE

Taking a compartmentalized view of the original arrangement of the kitchen and nearby living areas helped the design team reconfigure the kitchen in a way that improves the entire main floor of the home.



## MEAL PREP

The dual-fuel Wolf range, which anchors the cooking area, sits beneath a modern range hood from Vent-A-Hood and is flanked by Carrara-marble countertops. The zone is enhanced by extrawide base-cabinet drawers, glass-faced upper cabinets, a continuous marble shelf, and a utensil rack. The design of this zone keeps everything for making a meal within arm's reach, maximizing the efficiency of the small space.



new circulation path helps to organize the kitchen into two zones: one for prep and cooking, and the other for cleanup and storage. The original 1980s family room remains unchanged structurally, but we enhanced it with a more focused set of furnished spaces for casual dining and sitting.

Access to daylight was an important concern for the homeowners, and the kitchen benefits from two new windows. A single Marvin Magnum double-hung window, with tempered glass in the lower sash, floods the work area with daylight while creating an open, airy atmosphere. A second, smaller window is tucked beneath a set of open shelves to the left of the dishwasher. This small window washes daylight across the countertop while providing an unexpected view

to the backyard. The window alcove is framed with the same Carrara marble used for the countertop and nearby shelves.

## Light and white

Daylight is generously shared throughout the kitchen by reflecting off the bright marble countertops, walls that are clad in classic white subway tile, and cabinets that have been finished in lustrous off-white enamel paint. The effect is a clean, simple, and timeless style that permeates the kitchen and newly renovated living spaces. □

David O'Brien Wagner is an architect at SALA Architects in Minneapolis. Photos by Troy Thies, except where noted.

Architect David O'Brien Wagner, AIA, and Chris Meyer, AIA, of SALA Architects; [salaarc.com](http://salaarc.com)

Location Minneapolis Builder Vujovich Design Build, [vujovich.com](http://vujovich.com)



2



3

## DINING AND ENTERTAINING

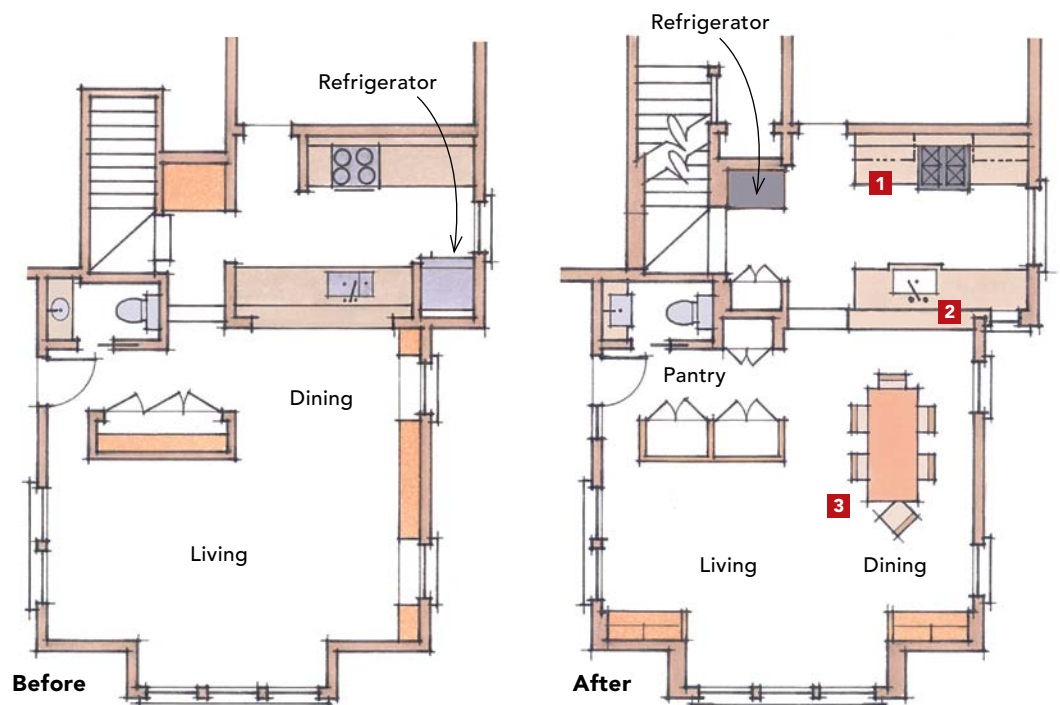
The location of the dining room remains unchanged, but from this space, the benefits of the reorganized floor plan are apparent. Long sightlines through the home transform the once dark and contained living areas into an open, light-filled, and comfortable gathering spot. The connectivity between the dining area, the kitchen, and the adjacent living room improves the entire living experience in the home.

## CLEANUP AND STORAGE

The commercially inspired Dornbracht faucet and Rohl farmhouse sink are placed directly opposite the range. Base-cabinet drawers, not doors and shelves, provide full and convenient access to most of the kitchen's storage. Additional cabinetry placed on the opposite side of the half-wall that separates the kitchen from the dining area can be used to store collectibles or dining-specific tableware. The entire zone is illuminated with Louis Poulsen pendants, which impart a distinctly modern quality to the kitchen.

## PLAN CORRECTED

Despite the delineated rooms, the previous layout functioned poorly. By relocating the refrigerator, the architect was able to reconfigure the landing to the basement and simplify the circulation pattern with a direct, open link to the dining and family rooms beyond. The new arrangement revitalized the kitchen and allows views and audible connectivity from space to space.



0 2 4 8 ft.